

# *Ras Kisimani*

*Eco Lodges and Permaculture Food Forest*

*planned at*

*Mafia Island Tanzania*

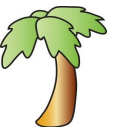
*This presentation is about a project that will be divided into two parts:*

- 1. Kisimani Farms; this will be a non-profit organisation. Our aim is to set this up like Zaytana Farms, PRI Australia.*
- 2. Ras Kisimani Ecolodge; this lodge will be a for-profit business*

*These projects will be formed into a symbiotic relationship\*.*

\*Set up your business structure or organizational structure.

A possible structure is a symbiotic relationship between a nonprofit and a for-profit business. A nonprofit is essential for certain grant funding and tax exemption purposes. For-profit business may allow you to get funding from investors.



*Location*













Original Survey 1989





# Ras Kisimani Eco Lodges and Permaculture Forest Proposal

*Project lay-out on original survey*







*New proposed lay-out after boundary recovery:*

*Green = farm area*

*Yellow = Eco-lodge area*





*Ras Kisimani beach*







*Ras Kisimani Lagoon*







**Ras Kisimani** is the far western cape of the main island, facing the Rufiji Delta. Kisimani Mafia, just north-east of the Cape is Kiswahili for "the place of the well". An old town dating to the 12th Century has been drowned by rising sea levels and a collapsing foreshore for over 100 years. The Kinasi library contains a full account of the archaeology of these ruins, once the most important town on Mafia, especially from the 12th to 14th Centuries. It was founded by Bashat, one of the sons of the first Sultan of Kilwa, and extended the control of the Sultan to Mafia. The power and wealth of the Sultan of Kilwa was based upon gold, ivory and customs tariffs on all goods traded on the southern coast. In its time it was far more important than Zanzibar but its economic influence waned upon the arrival of the Portuguese at the end of the 15th Century. There is little left of the town now, but visitors can easily find many beautiful potsherds and coins in the ruins and on the beautiful palm-fringed beach. The circular rock weights used to confine slaves at night can also be found here. Due to erosion the old well from which the town took its name now stands on the beach. The whole area is now a protected core zone of the Mafia Island Marine Park.

*Kisimani Mafia, the "Place of the Well"*







N.B

Total number of crops  
per each item:

a)	coconut trees	...	2,497
b)	cashewnuts	...	190
c)	mango trees	...	48
d)	guava trees	...	12
e)	banana trees	...	17
f)	pineapples	...	45
g)	lemon trees	...	7
h)	orange trees	...	2

*Ras Kisimani Landview*



# *Mafia Island's Accessibility*







*Kilindoni Airport to be renovated and made suitable for 55+ passenger airplanes*



*Boost for tourism*

*New Kilindoni Jetty to land  
bigger ships*

*Situation June 2012*





← Renovation  
Mafia Airport  
October 2012

Temporary Customs and  
Tax-Free shop  
←





Marine Life  
M.I.M.P  
( Mafia Island Marine Park )



# MAFIA ISLAND MARINE PARK

## Key

- Marine Park boundary
  - Land
  - Core Zone (terrestrial)
  - Specified-use Zone (terrestrial)
  - Reef
  - Core Zone (marine)
  - Specified-use Zone (marine)
  - 🤿 SCUBA dive-sites
  - 🏠 Tourist lodges
  - MIMP villages
  - Other villages
- MIMP HQ is located at Utende



## Zoning policy

Zone type	Management policy
CORE	No resource extraction but diving & research permitted.
SPECIFIED-USE	No pull-net fishing. No fishing by non-residents (including no sport-fishing).
GENERAL	National regulations apply. Non-residents require permits.





## BBC - Oceans - The Indian Ocean - The Spice Islands - Whale sharks, off Mafia Island

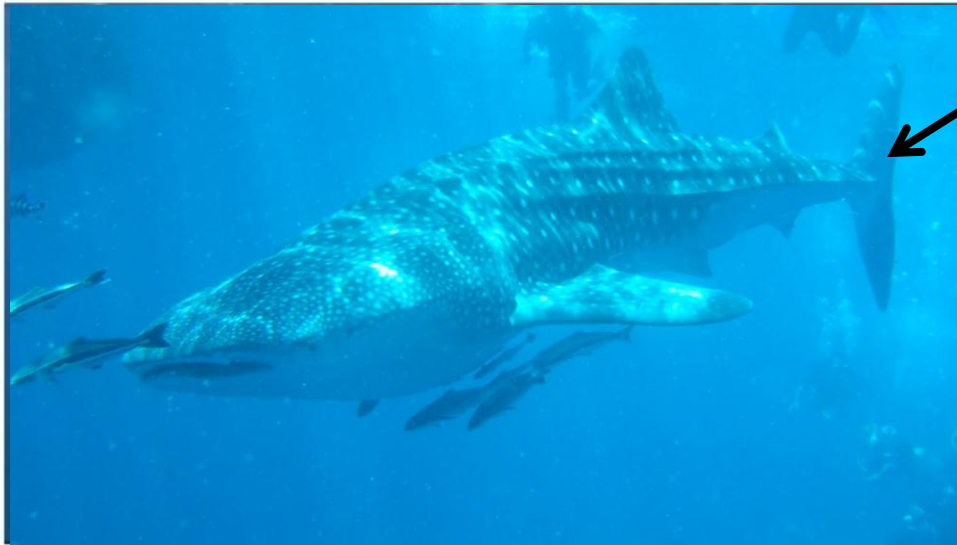
BBC Oceans investigates whalesharks

bbc.co.uk

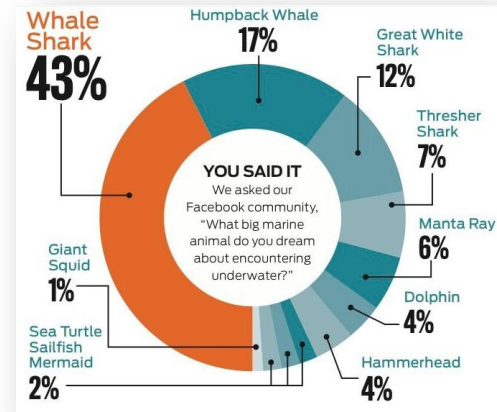
*Hawkesbill Turtles nest on our beaches*



*These whalesharks swim in groups right in front of our plot*



squalo balena - whale shark - Mafia island Tanzania 2008



WWF Global Sign In Help

[Home](#) [WWF?](#) [What We Do](#) [Our Earth](#) [You Can Help](#) [News](#)

---

## Dugong conservation in Tanzania

Like 0 Tweet 0 0

Posted on 05 April 2005 | 0 Comments

Mafia Island, Tanzania – WWF has initiated a dugong conservation programme in the islands off the Tanzanian coast, in an attempt to protect one of the world's most threatened marine mammals.



**THE DHOW WRECK ON MWAMBA UKUTA FRONTIER** lost a 12 m dhow close to Ras Kisimani, during high winds that forced the vessel onto the reef. Heavy seas then overturned her and she has since become home to a variety of interesting fish, including giant batfish and groupers. This excursion is wonderful when coupled with a picnic on Ras Kisimani beach.

**MANGE REEF AND SANDBAR** This is a sand bar with patch reef 3 km long located 18 km south-west of Kinasi. The best dive site is off the eastern corner of the reef where the reef drops off to a maximum depth of 20 m. At 10-14 m the coral is dominated by massive, encrusting forms with an impressive variety of soft corals flourishing at all depths. There are many juvenile fish, extensive stands of staghorn coral, octopus, crayfish, moray eels, and large pelagics.

### Excursion dive safaris outside of Chole Bay

#### 12 Kitutia Reef

DIFFICULTY: EASY

MAXIMUM DEPTH: 22 MT

TYPE: SLOPE

VIS: 15 – 30 MT.

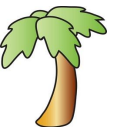
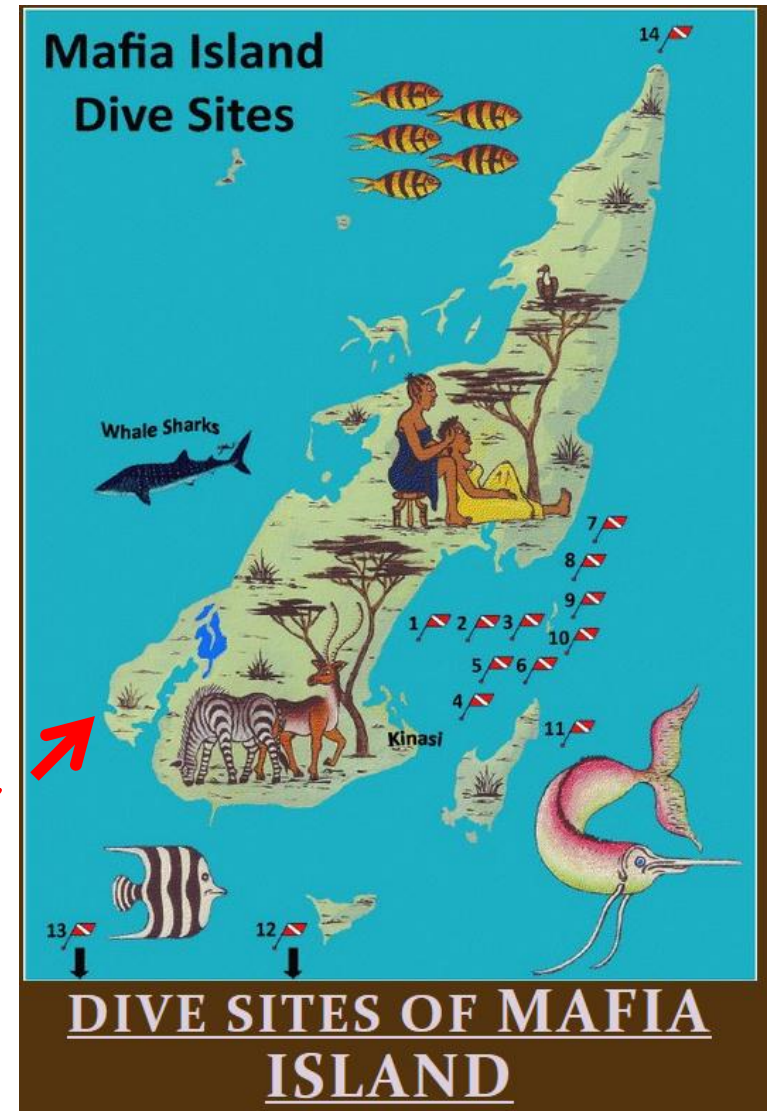
#### 13 Mange Reef

DIFFICULTY: EASY

MAXIMUM DEPTH: 26 MT.

TYPE: SLOPE

VIS: 15 – 30 MT.



# *History*



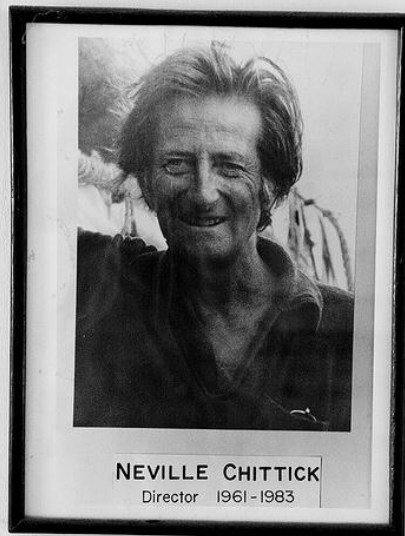


(l to r) Donald Wiseman next to his good friend Agatha Christie, her husband Max Mallowan, and Neville Chittick, on a dig at Nimrud

### Neville Chittick, 1961-1983



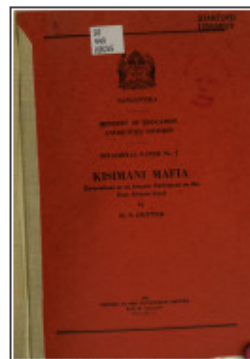
**Neville Chittick** was appointed the first Director of the Institute in 1961, a year after the Institute had been formally inaugurated. Immediately prior to this he had been the first Conservator of Antiquities in what was then Tanganyika. His principal research interest was the pre-Portuguese coastal archaeology of eastern Africa, and particularly the influence of Islam and maritime trade on the formation of Swahili identities. He conducted extensive excavations at the southern Swahili town of Kilwa, with its celebrated architectural remains, the results of which were published as a two volume report in the Institute's Memoirs series. His work at Kilwa and related sites on the southern coast and islands continued till the mid-1960s, after which he turned his attention to Manda, an early northern Swahili town located in the Lamu archipelago in northern Kenya, and various sections of the Somali coast, including the important 1<sup>st</sup> century BC to 5<sup>th</sup> century AD sites at Ras Hafun. Between 1972-74, he directed excavations at Aksum in northern Ethiopia, focussing in particular on the residential and burial areas associated with the elite. Unfortunately, the 1974 Revolution in Ethiopia and subsequent events curtailed further work at Aksum for the next two decades. The results of Chittick's research were nevertheless written up and published posthumously by Stuart Munro-Hay in the Institute's Memoirs series.



Portrait of Neville Chittick, Director of the British Institute in Eastern Africa 1961-1983, who was leading the excavations at Kilwa in the 1960s.

Picha ya aliyekuwa Mkurugenzi wa British Institute Afrika Mashariki miaka ya 1961 - 1983. Neville Chittick aliyenagaza uchimbuzi huko Kilwa miaka ya 1960 na kuendelea.

### Kisimani Mafia: excavations at an Islamic settlement on the East African coast



H. Neville Chittick



0 Recensies

Government Printer 1961 - 33 pagina's

*This islamic settlement  
( Kisimani Mafia ) is  
right on our plot*

Portrait of Neville Chittick, Director of the British Institute in Eastern Africa 1961-1983, who was leading the excavations at Kilwa in the 1960s.

Picha ya aliyekuwa Mkurugenzi wa British Institute Afrika Mashariki miaka ya 1961 - 1983. Neville Chittick aliyenagaza uchimbuzi huko Kilwa miaka ya 1960 na kuendelea.



# Historic 11th century coins returned to Tanzania

By In2EastAfrica Reporter



Kilwa coin

Tanzania has received coin collections from Kilwa and Kisimani Mafia, excavated in the area by the late Dr Neville Chittick, who worked in Tanzania as an archaeologist and researcher for many years.

The handing over ceremony of 1,446 Tanzanian coins was held in Dar es Salaam and were received by the Director of Antiquities, Mr Donatius Kamamba on behalf of the ministry of Information, Youth, Culture and Sports and witnessed by various media

representatives and members of the National Museum of Tanzania.

"What we are witnessing here today could not happen if it was not for the effort made by British Institute in Africa to curate the coins and return them to Tanzania," said Dr Kamamba, adding that the occasion is one of the important events towards Tanzania's effort to return its cultural heritage resources which have been deposited abroad even before colonial time.

He said the collection, which is one of the biggest and most important collections of Swahili Coast coins in the world, was handed over by the current director of the British Institute in East Africa Dr Ambreena Manji and Mr John Perkins, who played a major role to curate and document the coins.

← These coins were partly found on our site, and date from the 13th century







Tanzanian Maritime and Underwater Cultural Heritage Program - TMUCH

## Mafia Island Maritime and Underwater Cultural Heritage Survey March 2012

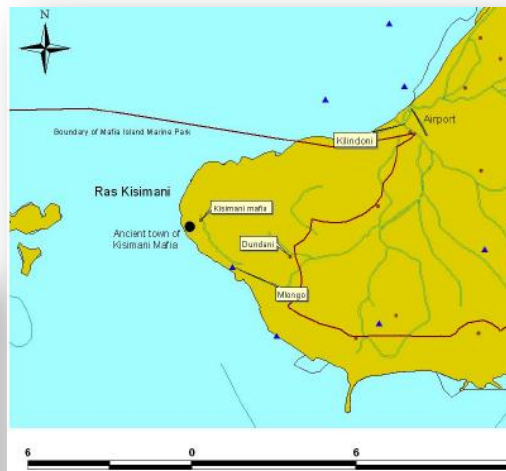


Figure 5: Kisimani Mafia site location



Figure 20: Stone east (as marked on site plan)



Figure 21: Stone seaward of none east



Figure 22: Stone west



Figure 8: Ceramic shards collected from the beach (small shards) and some from underwater (larger shards) Scale: 10cm on the left, then 20cm



Figures 9, 10, 11: Ceramic shards collected from the beach, scale in cm



Figure 12: Coins found on the beach

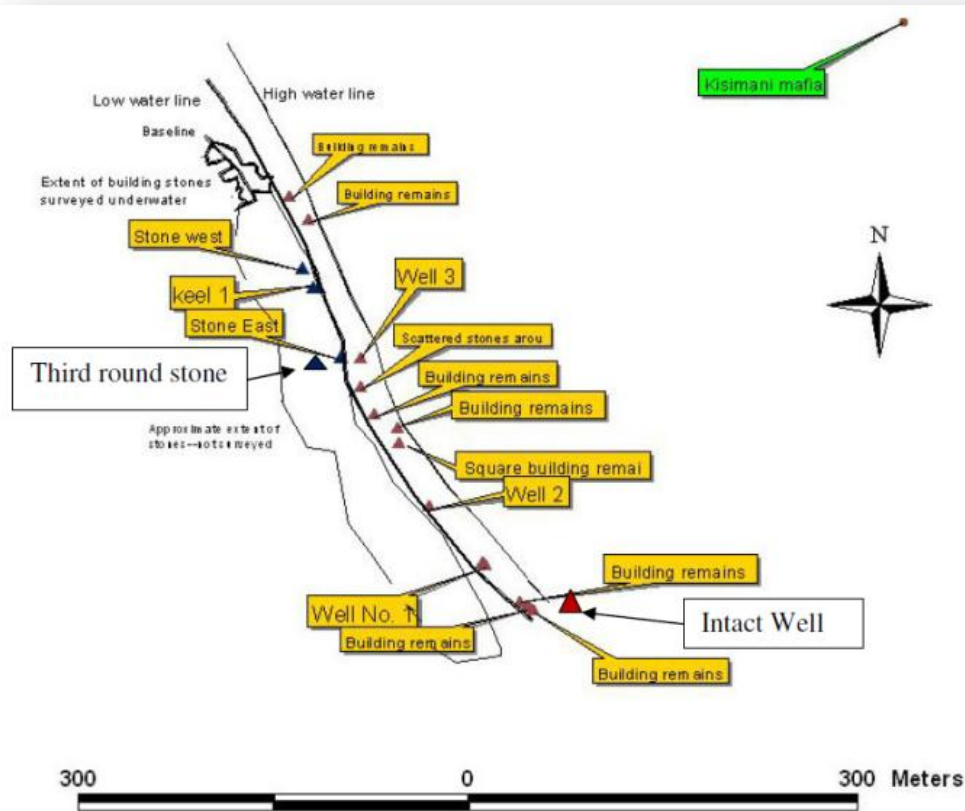


Figure 13: Kilwa mined coin on the beach



Figure 7: One of the wells found intact on the beach.





*This is one of the tree ancient mosques on our plot*



social and cultural dimensions. Several sites of historic ruins lie within the marine park, one at Ras Kisimani dating back to the 12th Century. Chole Island in the 15th – 19th









*Accomodation*  
*Ras Kisimani Eco Lodge*



## Budget Serengeti

Budget Serengeti's are in stock!



The two new Budget Serengeti includes a mild steel galvanized frame, medium canvas tent body & rain fly, stitched in ground sheet, zip on/off bathroom extension, stitched in zips, air vents, body and leg pegs, inner window storm flaps and are olive in color. The Budget Serengeti does not require a platform to be placed upon.



4-leg Budget Serengeti

*Base tent  
to be customized  
and placed on  
wooden deck*

<http://www.exclusivetents.com/index.htm>



Tent body (sleeping area) variations

3.5M x 4.6M

3.5M x 5.2M

3.5M x 5.9M

3.5M x 6.6M

3.5M x 6.9M

3.5M x 7.2M

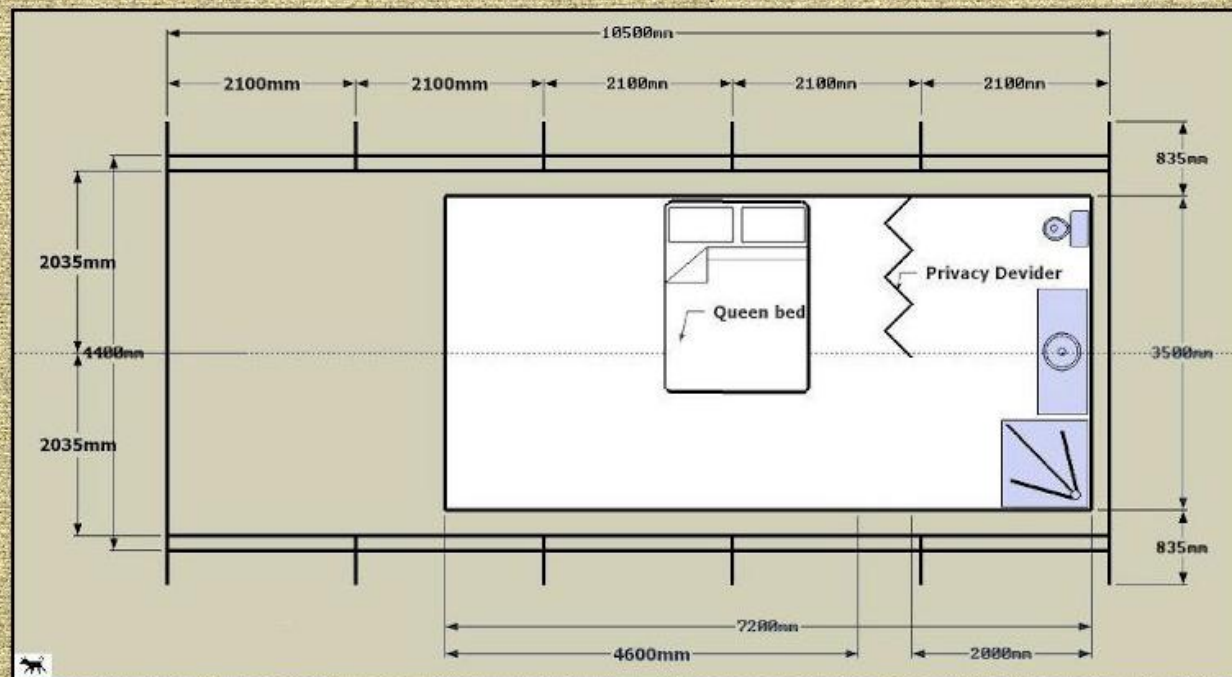
Other Serengeti options

Canvas bathroom walls and end gable

Wooden front door - single

Wooden front door - double

Royal End Gable



Typical 6-Leg Serengeti Tent layout with open-plan bathroom in rear.

Some basic Serengeti configurations are as follows:

Serengeti 4-Leg no bathroom (3.5x3.5m sleeping area) Total dims 6.3x5.1m

Serengeti 5-Leg with bathroom (3.5x5.2m sleeping area) Total dims 8.4x5.1m

Serengeti 5-Leg with bathroom (3.5x4.6m sleeping area) Total dims 8.4x5.1m

Serengeti 6-Leg with bathroom (3.5x4.6m sleeping area) Total dims 10.5x5.1m

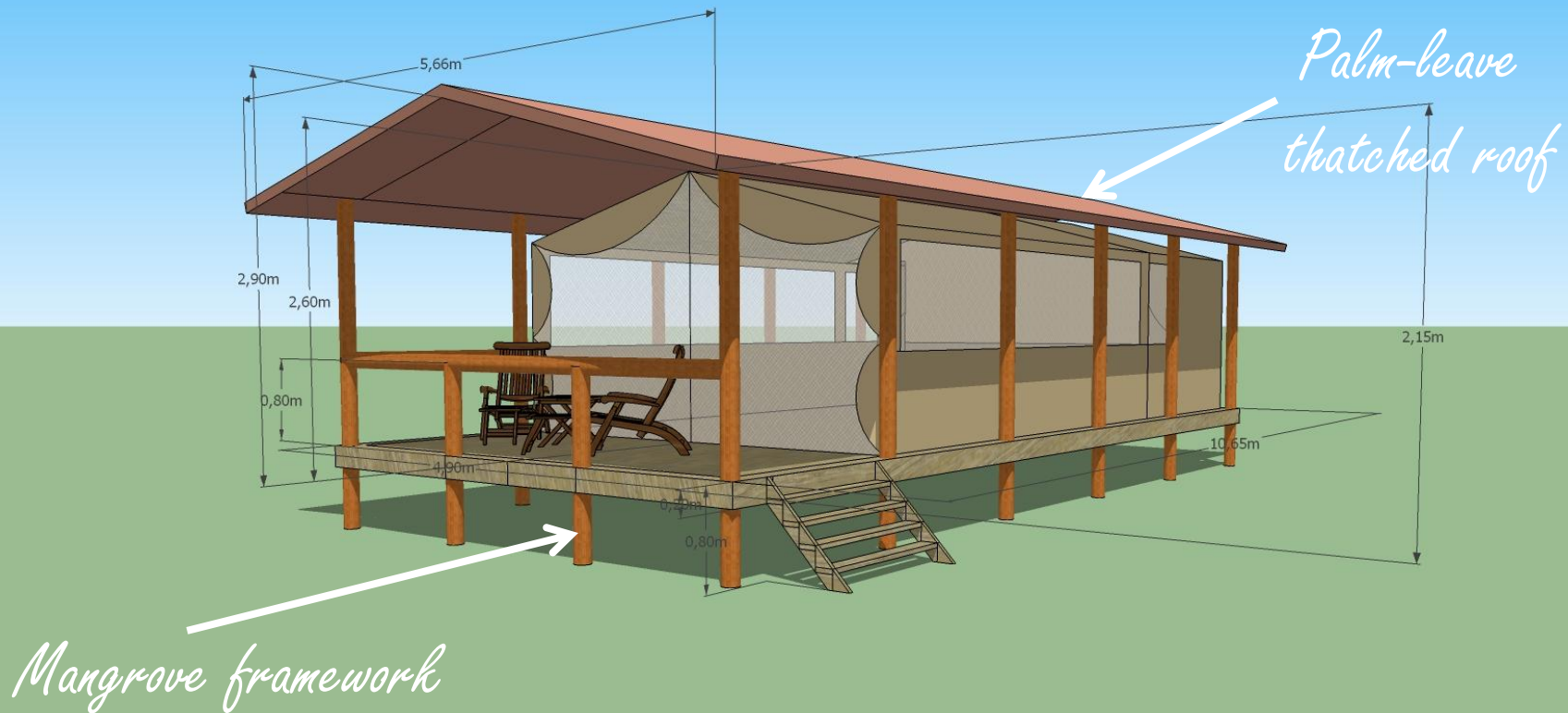
Serengeti 7-Leg with bathroom - available - info upon request.

Bathroom area is 3.5x2m





*I would like this type of  
tents for the accomodation  
of students as well!*



*Proposed semi-permanent tentsite leaves no damage to  
archeological findings, topsoil and vegetation*





*Twin tent*

*This is how we would like  
to facilitate our costumers*



*Double tent*

*Average Mafia windspeed 4m/s gives convenient ventilation*







*Tent view*





*Proposed bathroom area*







*Proposed accomodations*





*Mess tent interior*







*Mess tent interior*







*Mess tent; view from the outside*







*Dining/mess tent*







*Mess tent; Dining Area*





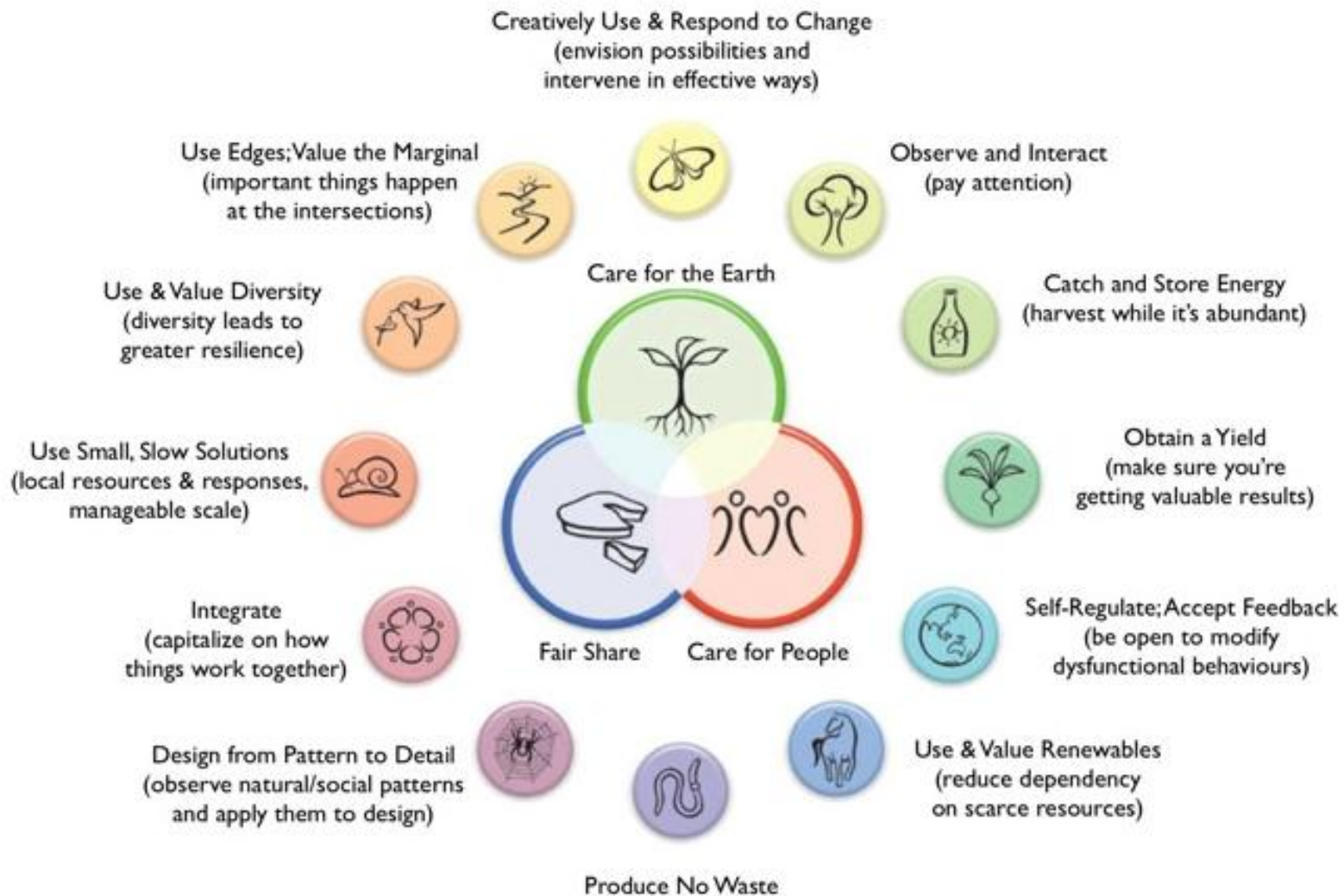




*Permaculture Research Institute*  
*PRI-Tanzania*

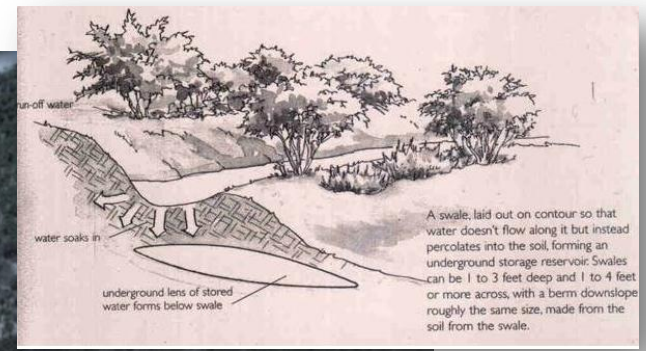
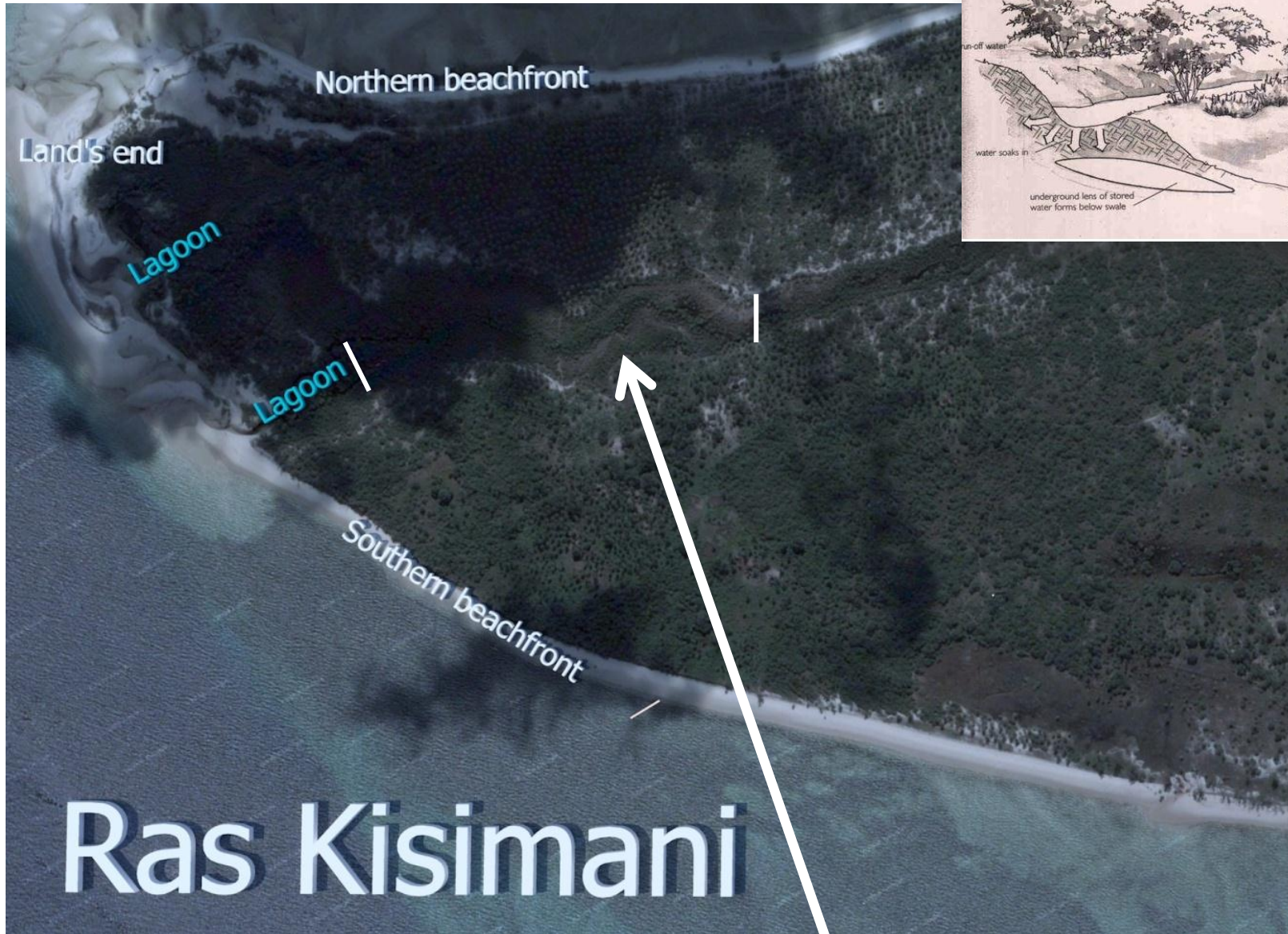






*Permaculture Principles; People Planet Profit*





*Dammed Water Harvesting Area from which  
swales will be formed*



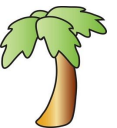




*Permaculture plot / Food Forest  
"Kisimani Farms"*

*Educational Campus and dormitory  
( approx. 15 acres)*

*This is the old lay-out  
After boundary recovery the new  
farm area could be approx.  
60 acres ( next pages )*

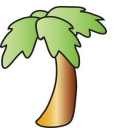




*New lay-out after boundary recovery:*

*Green = Kisimani Farms*

*Brown = Ras Kisimani Eco-lodge*













through rifting of the continental shelf. The entire island consists of coral rag overlain by sandy loam soil; with a maximum altitude of 20 m. soils are mainly alkaline with mean pH of 7.5.

*Before*

*After*



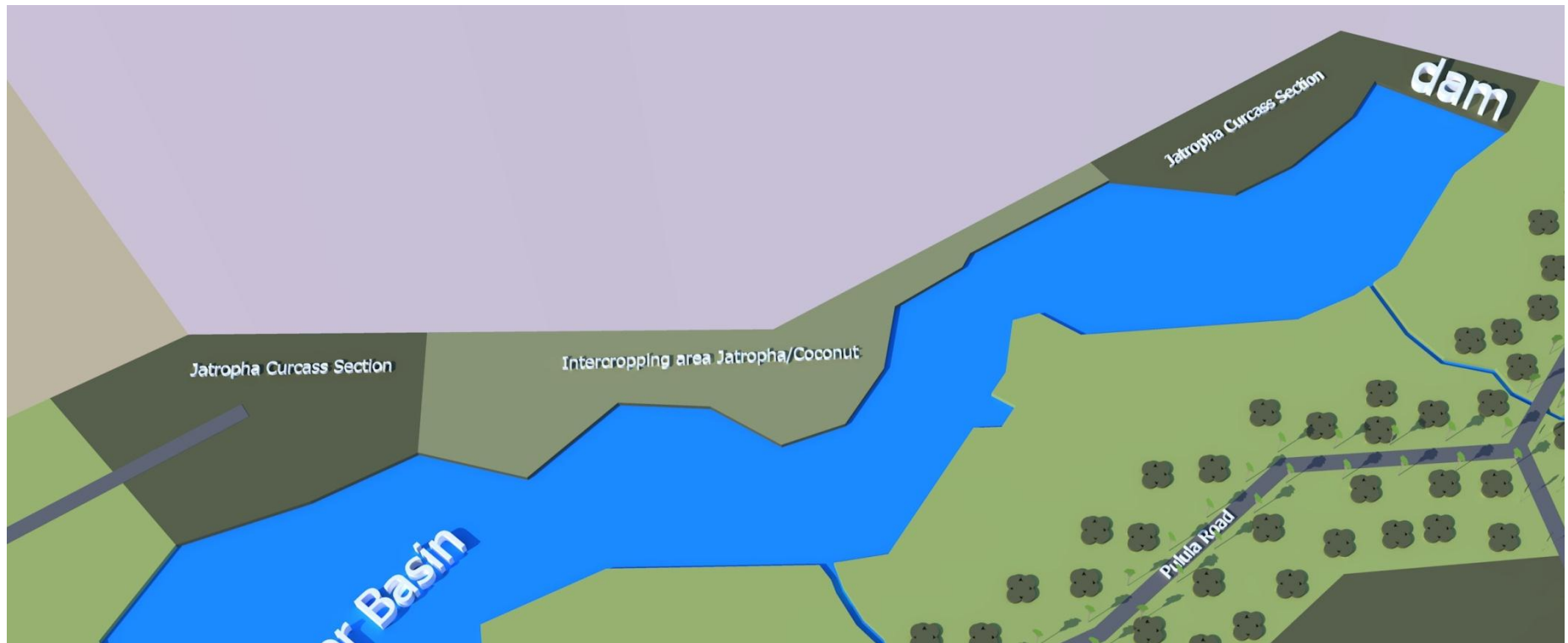




*Permaculture Forest; staff housing implemented*

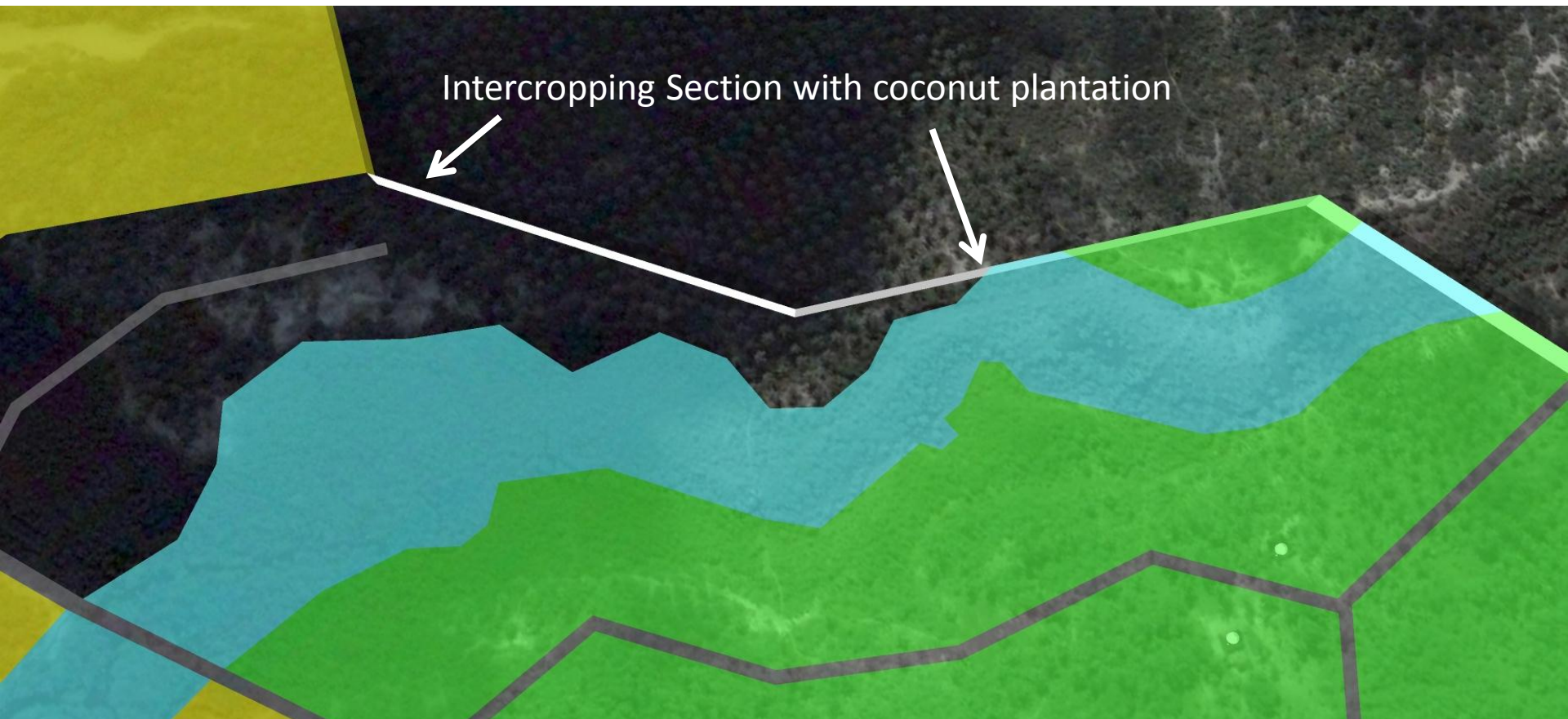






*Jatropha Curcass section; oil for bio fuel*  
*6 Acres*

Intercropping Section with coconut plantation







Intercropping Jatropha by growing it with Palm Tree's provides shade which the Jatropha likes as well as Coconuts in about 4 years by which time Jatropha Tree's themselves can be upto 3 meters high as you can see.

When designing a Jatropha Plantation for Bio Aviation Fuel production I want to include beneficial plants to intercrop with the Jatropha I am growing, tobacco is not an ethical cash crop to grow for the local community whereas growing plants like Watermelons, Tomato Plants, Peppers, Cucumber, Legumes, Basil, Chard, Lettuce and more importantly in terms of growing sustainable cash crops intercropped with Jatropha, Spices.

Whilst looking at the spice market with a wide variety of herbs and spices which can be intercropped with Jatropha and sold for cash I noticed that there was also a healthy market for growing medicinal plants alongside the Jatropha as an alternative to monoculture plantation.

Aloe Vera is an example that would easily work intercropped with Jatropha with a good commercial value being added to the plantation by choosing a Jatropha / Aloe Vera polyculture with a few Palm or Coconut trees' intercropped for shade.



#### HNYT-105 High efficiency jatropha oil press machine

[Add to Inquiry Cart](#) [Add to My Favorites](#) Share to: [f](#) [t](#)

FOB Price:	US \$100 - 3,000 / Set   <a href="#">Get Latest Price</a>
Port:	Shanghai
Minimum Order Quantity:	1 Set/Sets
Supply Ability:	1000 Set/Sets per Month
Payment Terms:	L/C,T/T



*Oil for bio fuel; approx. 3.000 liters/acre*



*Grid*





Panasonic  
ideas for life

Global

Products & Solutions | Support

About Panasonic | News | Corporate Profile | IR | Environmental Activities | CSR | Technology | Careers

[Home](#) > [About Panasonic](#) > [Environmental Activities](#) > [A lifestyle with virtually zero CO2 emissions](#) > [Store created energy](#)

Environmental Activities

Panasonic's Environmental Activities  
Environmental Sustainability Management  
Initiatives for Reducing CO2 Emissions  
Initiatives for Resources Recycling  
Products  
Manufacturing  
Collaboration with Stakeholders  
Biodiversity Conservation  
Global Eco Project  
Environmental Data  
Topics  
Showrooms / Events  
Recommendation Contents  
Environmental Activities site map

A lifestyle with virtually zero CO2 emissions

Outline

Save Energy

Create Energy

Store Energy

Manage Energy

Store Energy

## Store created energy

### Lifestyle with energy storage

The energy generated by solar power and fuel cells, in combination with storage batteries, ensures that household energy will always be available on demand. This achieves Panasonic's goal of a lifestyle with virtually zero CO2 emissions throughout the entire house.

Household Lithium Ion Batteries

Storage batteries hold the energy generated by a combination of solar power and fuel cells to ensure a constant supply of electricity on demand.

Panasonic's household lithium ion batteries are not only small and highly efficient, but also have ample storage capacity.

[Technology for Storing Energy \[Video\]](#)

[Lithium Ion Batteries Lineup](#)

*Electric power storage facilities*

Thank you for your reply.

Attached please find the pricing sheet and more information about our XT iDirect VSAT system. I am confident it will meet all your connectivity requirements. Please refer to "Arabsat 5C" tab in the pricing - we are using Arabsat 5C satellite (C-band) to cover your location.

Our service features the latest technology - the iDirect Evolution platform. There is a page on our web site describing iDirect satellite platform in detail:

<http://www.bcsatellite.net/satellite-internet-idirect.html>

What makes iDirect unique is that it is the only system on the market capable to provide two bandwidth quotas as a single integrated Internet connectivity solution, these quotas are BIR (Burstable Information Rate) and CIR (Committed Information Rate). An inexpensive and broadband BIR quota is used to provide fast and efficient Internet access for non-realtime tasks such as web browsing, file downloads, e-mail and similar while dedicated segment CIR quota is required for the business-class VoIP and videoconferencing applications demanding realtime flow of bandwidth. This is a unique feature.

The iDirect VSAT system itself is capable to support the wide range of applications, ranging from a SOHO/SME setup and ending with a high-end MWR, Internet cafe and small ISP/Hot Spot business, even more effectively when compared to traditional 100% dedicated SCPC links.

Available service levels are from 256x64 kbps, all the way up to 4096x1024 kbps, with different amounts of dedicated CIR bandwidth. Please note that all our service packages are FAP free - we do not have any traffic limits.

For your immediate requirements with only 5 users I would suggest to consider starting with Premium 256 kbps receive and 128 kbps transmit service, priced at \$309 per month.

A few other options you may be interested in:

Premium 512/128 = \$419 per month

Premium 512/256 = \$523 per month

Premium 768/256 = \$644 per month

Premium 1024/256 = \$761 per month

I would suggest a conservative start as you can always upgrade and add more bandwidth at any time later on.

The equipment you will need is the 1.8m antenna, 5 Watt BUC (transmitter), LNB, iDirect Evolution X3 modem and cables/accessories. The complete hardware set is priced at \$3,200 plus shipping from our stock in Dubai. Delivery price to be confirmed.

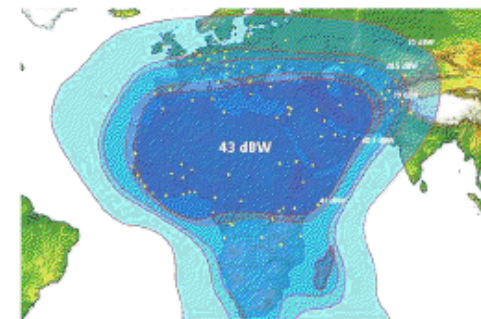
Please let me know your thoughts on this offer.



### **Enhanced C-Band Kit**

1.8m C-Band receive/transmit antenna,  
Class II or better  
5 Watt SSPA BUC  
PLL-Stabilized LNB  
iDirect Evolution X3 Satellite Modem  
30m IFL Cables & Accessories  
**\$3,200.00** plus shipping

Enhanced kit with a larger 1.8m antenna and 5 Watt BUC, applicable for Arabsat 5C and NSS-12 satellites, C-Band African beam recommended for countries with tropical climate zones. Allows to run any C-Band XT iDirect service level available, with a maximum 1024 kbps on Tx.



**Arabsat 5C Satellite**  
C-band  
Africa and Middle East

*Satellite telecommunications*

